

Spoto

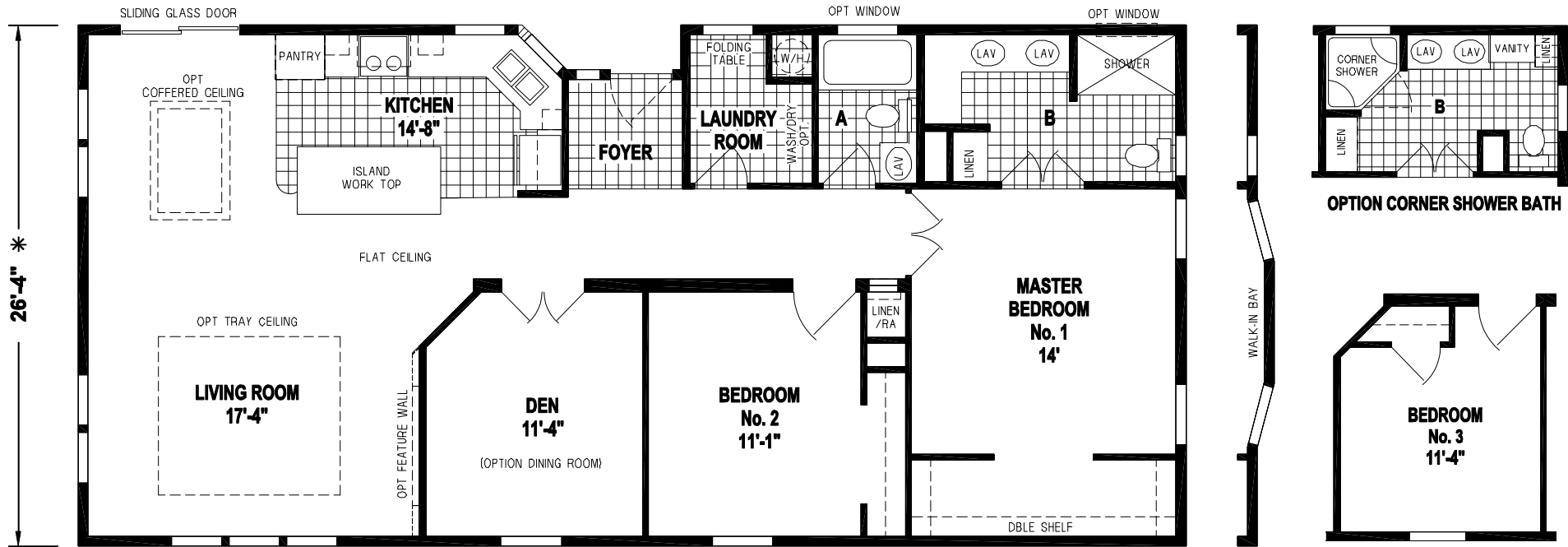
Palm Bay Series

SKYLINE

FactorySelectHomes

2 Bedrooms, 2 Baths
Approx. 1,451 Sq. Ft.

Last Updated: 3-6-19



FactorySelectHomes

19280 Cortez Blvd.
Brooksville, FL 34601
1-800-716-6337

www.FactorySelectHomes.com

For Detailed Directions See Map On Our Website



I authorize Factory Expo Home Centers to build my house, per this plan.

X _____

Customer Signature/Date

Important: Due to our policy of constant improvement, all information in our brochures may vary from actual home. The right is reserved to make changes at any time, without notice or obligation, in colors, materials, specifications, processes, and models. All dimensions and square footage calculations are nominal and approximate figures. Please check with your sales person for specific and current information.